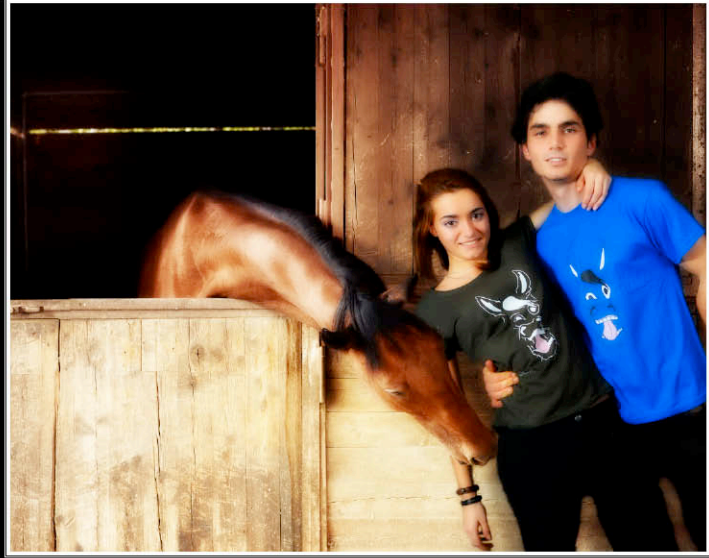


SPRING/SUMMER COLLECTION 2014



Caval Code

BETWEEN DISCIPLINE AND GAME. CAVALCODE PRESENTS THE NEW SPRING/SUMMER COLLECTION

CAVALCODE IS AN EQUESTRIAN'S TRADEMARK FOR HORSE AND RIDER'S CLOTHING , CREATED BY YOUNG RIDERS AND "HORSEMEN" WITH THE INTENT TO TRANSFER THE "CODE OF THE HORSE " FROM THE EQUESTRIAN WORLD TO SPORTSWEAR.

VERSATILITY, STRENGTH, ELASTICITY, ELEGANCE AND SIMPLICITY - SOME OF THE MAIN CRITERIONS OF HORSEMANSHIP - WERE IN FACT IMPRESSED IN YOUTH, COLORFUL AND FASHIONABLE CLOTHINGS THAT IS WELL SUITED FOR SPORTS AND DAILY USE FOR ALL THOSE WHO WANT TO SHARE WITH THE WORLD THEIR LOVE FOR HORSES.

SIMPLICITY AND HIGH QUALITY ARE THE MAIN CHARACTERISTICS OF GARMENTS THAT PUT THE HORSE IN THE MIDDLE OF IT ALL.

PASSION, FUN, EXCITEMENT, HUMOR AND ENJOYING ARE THE KEY WORDS OF OUR UNCONVENTIONAL AND FULL OF ALL THE COLORS OF SUMMER COLLECTION 2014.

Rider wear





“Yin and Yang” Lady-Fit T-shirt

165 gsm • 100% cotton • Featuring flattering, feminine neckline • Shaped side seams for a feminine fit • Cotton/Lycra® rib crew neck with tapped neckline •

Size: S-XL

Colour: Red - Sunflower



“Yin and Yang” Men’s Full Cut T-Shirt

145 gsm • 100% cotton, Heather Grey: 97% cotton, 3% polyester • neckband • double seam at neckline • sleeve ends and hem with seam • preshrunk tubular fabric for optimum shape retention • loose fit.

Size: S-XL

Colour: Red - Sunflower



“Dressage Code” Lady-Fit T-shirt

165 gsm • 100% cotton • Featuring flattering, feminine neckline • Shaped side seams for a feminine fit • Cotton/Lycra® rib crew neck with tapped neckline •

Size: S-XL

Colour: Navy - Heather Grey

“Cavalcode” 5 Panel Cap

5-panel cap • Seamless front panel • Eyelets • Peak with six rows of stitching • Rip-Strip™ size adjuster

Colour: White- Grey- Navy-Black- Red

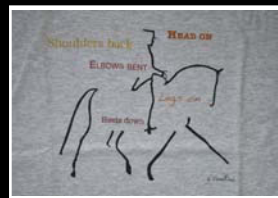


“Dressage Code” Men’s Full Cut T-Shirt

145 gsm • 100% cotton, Heather Grey: 97% cotton, 3% polyester
• neckband • double seam at neckline • sleeve ends and hem with seam • preshrunk tubular fabric for optimum shape retention • loose fit.

Size: S-XL

Colour: Navy - Heather Grey





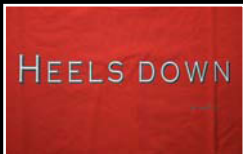
“Heels Down”

Men’s Full Cut T-Shirt

145 gsm • 100% cotton • neck-band • double seam at neckline • sleeve ends and hem with seam • preshrunk tubular fabric for optimum shape retention • loose fit.

Size: S-XL

Colour: Red - Green

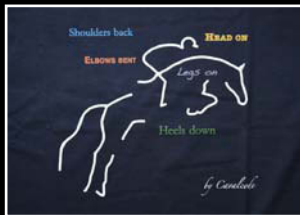


“Heels Down” Lady-Fit T-shirt

165 gsm • 100% cotton • Featuring flattering, feminine neckline • Shaped side seams for a feminine fit • Cotton/Lycra® rib crew neck with taped neckline •

Size: S-XL

Colour: Red - Green



“Jumping Code”

Men’s Full Cut T-Shirt

145 gsm • 100% cotton • neck-band • double seam at neckline • sleeve ends and hem with seam • preshrunk tubular fabric for optimum shape retention • loose fit.

Size: S-XL

Colour: Navy - Yellow

“Jumping Code” Valueweight V-neck Lady-Fit T-shirt

165 gsm • 100% cotton • New fit and longer body length • Shaped side seams for a feminine fit • Cotton/Lycra® rib crew neck with taped neckline •

.Size: S-XL

Colour: Yellow- Navy





“Angry Horse” Lady-Fit T-shirt

165 gsm • 100% cotton • Featuring flattering, feminine neckline • Shaped side seams for a feminine fit • Cotton/Lycra® rib crew neck with tapped neckline

Size: S-XL

Colour: Black - Sky Blue



“Angry Horse”

Men's Full Cut T-Shirt

145 gsm • 100% cotton • neckband • double seam at neckline • sleeve ends and hem with seam • preshrunk tubular fabric for optimum shape retention • loose fit.

Size: S-XL

Colour: Black - Sky Blue





“Happy Horse” Lady-Fit T-shirt

165 gsm • 100% cotton • Featuring flattering, feminine neckline • Shaped side seams for a feminine fit • Cotton/Lycra® rib crew neck with tapped neckline •

Size: S-XL

Colour: Carbon Black - Royal Blue





**“Happy Horse”
Men’s Full Cut T-Shirt**

145 gsm • 100% cotton • neckband • double seam at neckline • sleeve ends and hem with seam • preshrunk tubular fabric for optimum shape retention • loose fit.

Size: S-XL

Colour: Carbon Black - Royal Blue

Cavalcode 5 panel Cap

5-panel cap • embroidered front panel • Eyelets • Peak with six rows of stitching
• Rip-Strip™ size adjuster.

Colour: Red - Grey - White - Black - Navy





“Dressage’s Words” Men’s Full Cut T-Shirt

145 gsm • 100% cotton • neck-band • double seam at neckline • sleeve ends and hem with seam • preshrunk tubular fabric for optimum shape retention • loose fit.

Size: S-XL

Colour: Heather Grey



“Dressage’s Words” Lady-Fit T-shirt

165 gsm • 100% cotton • Featuring flattering, feminine neckline • Shaped side seams for a feminine fit • Cotton/Lycra® rib crew neck with tapped neckline •

Size: S-XL

Colour: Heather Grey



“Equestrian sport’s Words” Lady-Fit T-shirt

160 gsm • 100% cotton •
Featuring flattering, feminine
neckline • Shaped side seams for
a feminine fit • Cotton/Lycra®
rib crew neck with tapped neck-
line •

Size: S-XL

Colour: White

“Equestrian sport’s Words” Men’s Full Cut T-Shirt

140 gsm • 100% cotton • neck-
band • double seam at neckline •
sleeve ends and hem with seam •
preshrunk tubular fabric for
optimum shape retention • loose
fit.

Size: S-XL

Colour: White





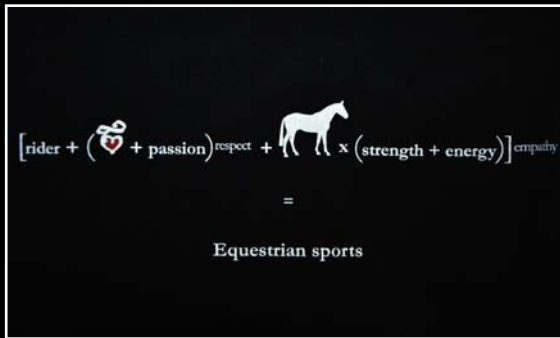
“Love Equation” Lady-Fit T-shirt

165 gsm • 100% cotton • Featuring flattering, feminine neckline • Shaped side seams for a feminine fit • Cotton/Lycra® rib crew neck with tapped neckline

Size: S-XL

Colour: White - Black





“Love Equation”

Men's Full Cut T-Shirt

145 gsm • 100% cotton • neckband • double seam at neckline • sleeve ends and hem with seam • preshrunk tubular fabric for optimum shape retention • loose fit.

Size: S-XL

Colour: White - Black





“Cavalcode” Lady-Fit T-shirt

165 gsm • 100% cotton • Featuring flattering, feminine neckline • Shaped side seams for a feminine fit • Cotton/Lycra® rib crew neck with tapped neckline

Size: S-XL

Colour: Heather Grey - Navy



“Cavalcode”

Men's Full Cut T-Shirt

145 gsm • 100% cotton • neckband • double seam at neckline • sleeve ends and hem with seam • preshrunk tubular fabric for optimum shape retention • loose fit.

Size: S-XL

Colour: White - Black







“Cavalcode”

Men's Piqué Polo

• 230 gsm • 100% cotton • Neckband • Rib knit collar and sleeve cuffs • 2 button placket • Tone-on-tone buttons • Side vents.

Size: S-XL

Colour: White - Navy

“Cavalcode” Ladies Piqué Polo

180 gsm • 65% polyester, 35% cotton • 2-button placket • tone-on-tone buttons • side seams • double-needle stitched bottom hem • suitable for 60°C wash •

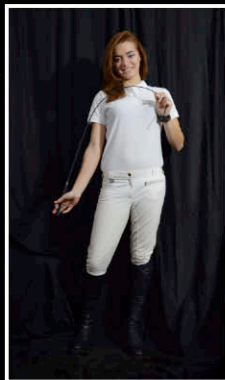
Size: S-XL

Colour: White - Burgundi

Cavalcode 5 panel Cap

5-panel cap • embroidered front panel • Eyelets • Peak with six rows of stitching • Rip-Strip™ size adjuster.

Colour: Red - Grey - White - Black - Navy



Horse wear



Fleece Rug "Cavalcode"

Antipilling Fleece Rug with contrast color and logo cavalcode

Different sizes



Ribbon Saddlepad "Cavalcode"

English saddlepad . 100% Cotton . 200 Grams Polyfill . Machine Washable . Billet Straps . Girth Loops . Embroidery "Cavalcode"

Colour: Green



© Copyright by

CavalCode Ltd
London

www.cavalcode.com

Mail: cavalcode@gmail.com